

## SYTECHS CONCRETE PAVERS

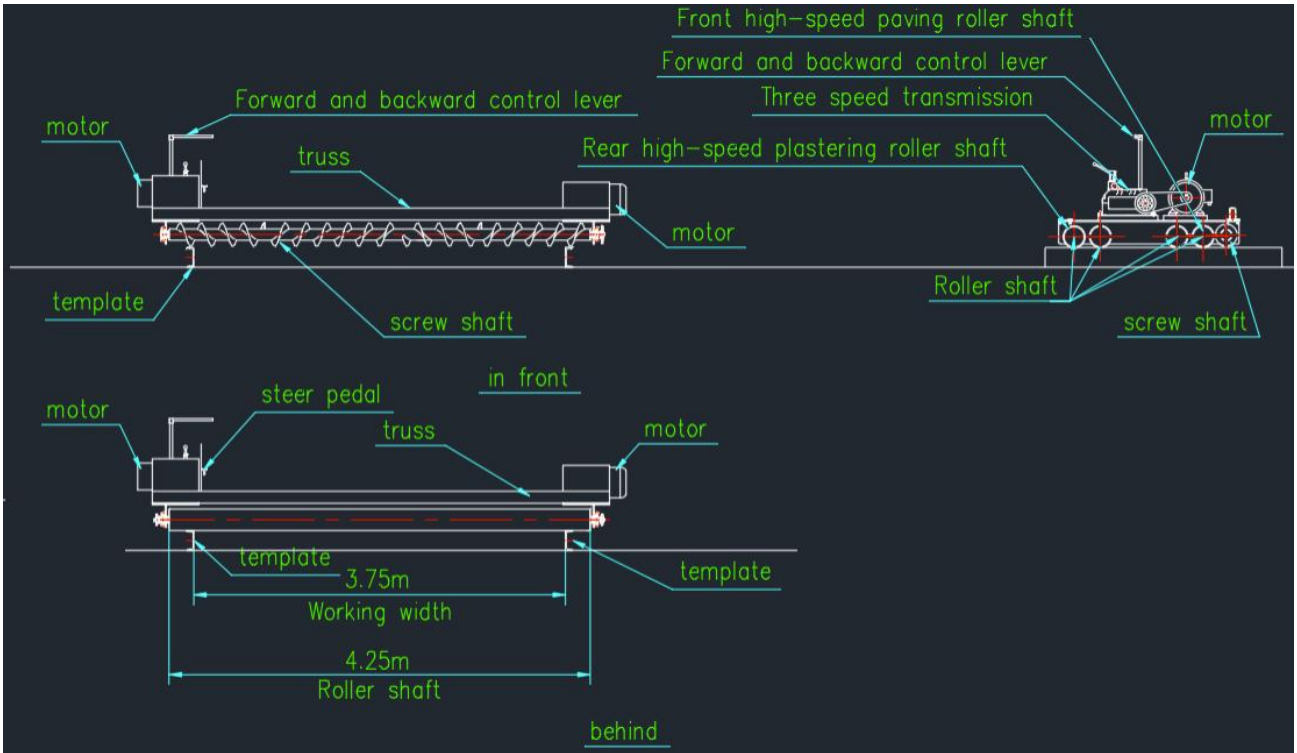
### ST-CP SERIES



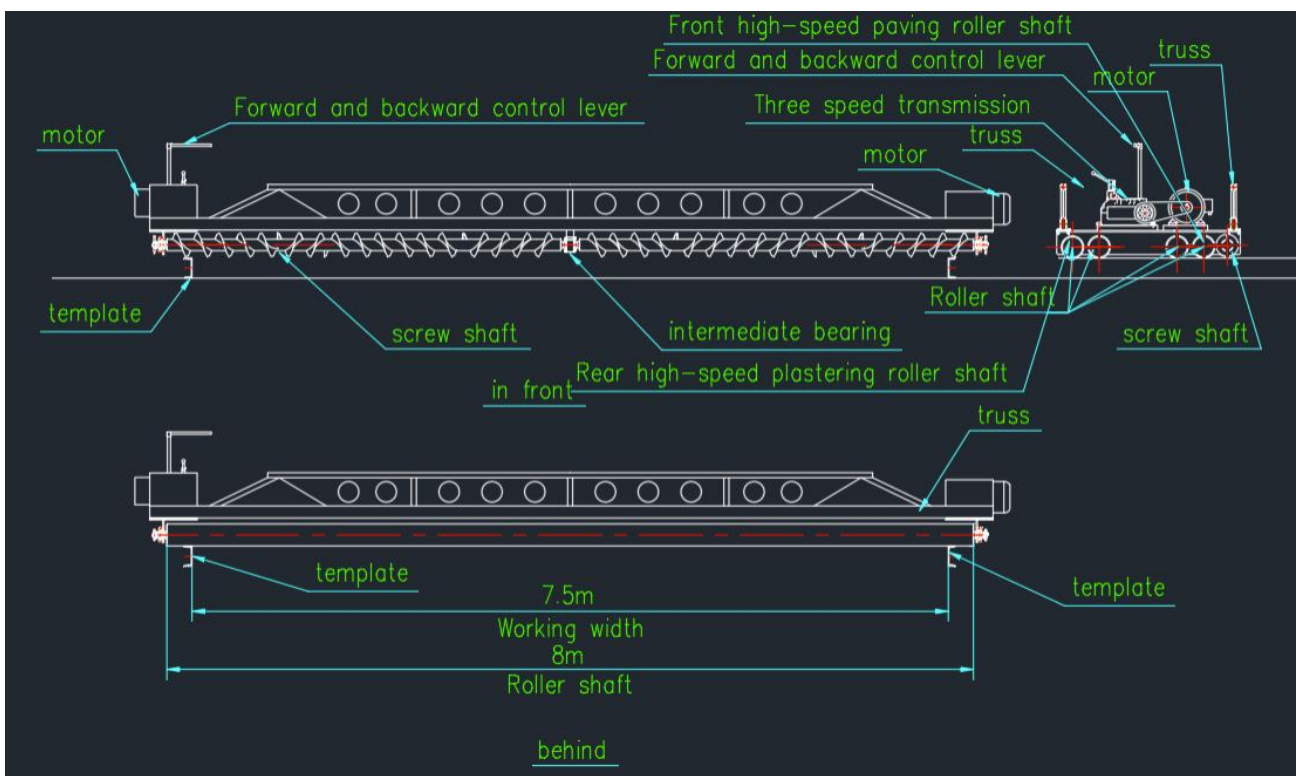
The Sytechs Concrete Paver is designed specifically for concrete pavement from 5 to 50 cm thickness. The paver has a standard compaction and spreading width of 3.75m & 7.5m. The paver rolls on U channels, which height determines the thickness of the rigid pavement. Concrete should be poured in front of the paver and across the width between the U channels. The distance between the U channels can vary depending on the required width of the pavement but not exceeding the max width of the rollers. The Sytechs paver can be powered by an electric motor through a gearbox for better traction. A Diesel engine (Optional) can be incorporated as well depending on customer's requirement. The paver can be equipped with mechanical concrete vibrators, High speed plastering roller (optional).



Model	ST-CP3750	ST-CP7500
Roller length	4m	7.9m
Max Paving Width	3.75m	7.5m
Maximum paving thickness	8 – 50 cm	



DRAWING: ST-CP3750



DRAWING ST-CP7500





## TRUSS MOUNTED CONCRETE VIBRATORS



Model	ST-CV3750-PDH151	ST-CV7500-PDH151
Max Internal Rolling Width	3.75m	7.5m
Vibrators Type	High Frequency	
N0 of Vibrators	7	14
Vibrators Model	PDHI51	
Input Voltage	220V/50HZ	
Exciting Force	2500 N	
Vibrating Rod Diameter	50mm	
Motor Speed	12,000 rpm	
Rubber Hose Length	1.5 m	





